

# 2024

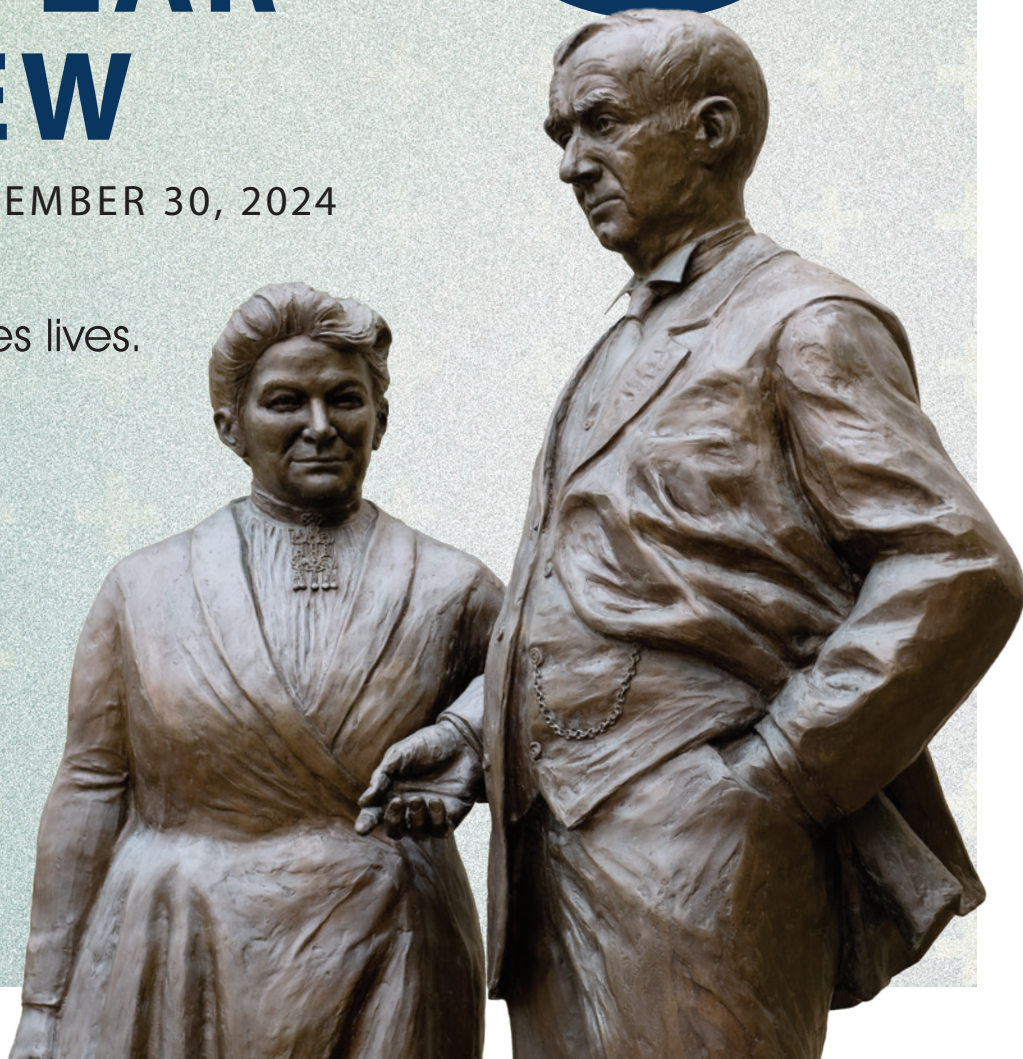


## FISCAL YEAR IN REVIEW

OCTOBER 1, 2023 – SEPTEMBER 30, 2024

Where generosity changes lives.

**GUNDERSEN**  
MEDICAL FOUNDATION





# IMPACT REPORT

2024



Dear friends and supporters,

**A**s we reflect on the past year, we are filled with gratitude for the incredible impact our community has made through Gundersen Medical Foundation. Together, we have achieved remarkable milestones that have enhanced patient care and supported better health outcomes for the community.

In fiscal year 2024, we proudly reported \$7.34 million in philanthropic revenue from more than 9,000 generous supporters, allowing us to allocate nearly \$1.3 million to pediatric programs and support families through Children's Miracle Network (CMN)

Hospitals®. Grants that support pediatric patients ensure essential resources like adaptive equipment and meal vouchers are accessible to families across CMN Hospitals' 25-county service area.

Our philanthropic efforts have positively impacted more than 100 departments within the Emplify Health by Gundersen region, with distributions totaling over \$4.2 million. This funding has been instrumental in advancing medical research, education and patient services, including impactful grants for our Neonatal Intensive Care Unit (NICU) and Outpatient Behavioral Health programs.

We are also proud to highlight our commitment to education and research, with more than 2,000 students gaining clinical experiences and numerous groundbreaking studies underway. Our dedication to improving health outcomes is stronger than ever, and we are excited to share these achievements with you.

Thank you for being such an essential part of our mission. Your support empowers us to continue making a difference in the lives of our patients and their families, helping to create thriving communities together.

With gratitude,

**Stephen Shapiro, MD**

*Chair, Gundersen Medical Foundation*

---

**Lindsey Preston, MASL, BSN, RN**

*Vice president, Gundersen Medical Foundation*

\$7.34M

TOTAL GIFT REVENUE

from

32,535

GIFTS

9,042

DONORS

790

RECURRING DONORS

Other highlights

\$198,460

RAISED from 15 donors to purchase 23 NEW INFUSION CHAIRS for patient care

13

NEW LEGACY SOCIETY MEMBERS

4,951

EVENT ATTENDEES

# CHILDREN’S MIRACLE NETWORK HOSPITALS®



2024 CMN Hospitals Hero families and social worker Carma Willers

\$1,268,141 allocated to

PEDIATRIC PROGRAMS, RESEARCH, SERVICES AND PATIENT ASSISTANCE



\$357,998

awarded through 538 grants that went directly to families in our 25-county service area

\$104,354

distributed to purchase pediatric adaptive equipment, sensory tools, home modifications and other medically essential items

\$86,462

distributed to families for gas cards, meal vouchers, lodging and other necessities



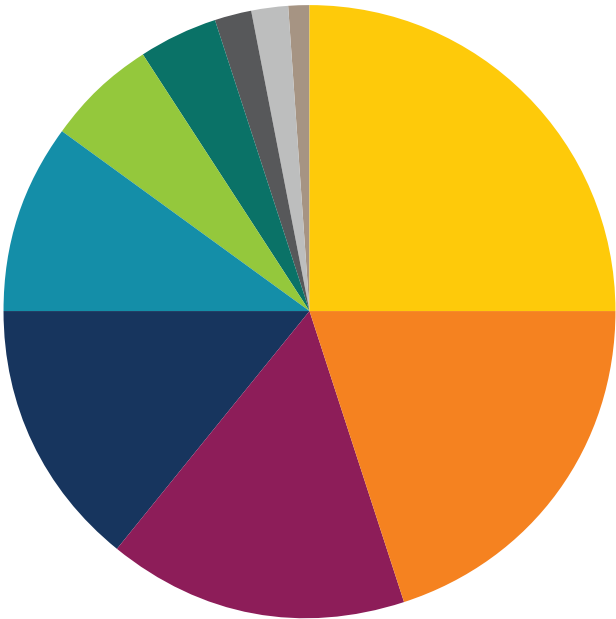
## STEPPIN’ OUT IN PINK

had more than 4,000 walkers in 2024. \$443,000 was raised for local breast cancer research and patient support programs.

FUND DISTRIBUTIONS

Philanthropy  
distributions:  
**\$4,236,061**

These distributions  
positively impacted patient  
care and access to care  
across more than 100  
departments and locations  
of the Emplify Health by  
Gundersen region.



25%	Pediatrics	\$1,078,727
20%	Medical Research	\$835,591
16%	Medical Education	\$671,388
14%	Oncology	\$584,758
10%	Patient Services & Community Health	\$415,877
6%	Staff Education	\$235,753
4%	Behavioral Health	\$187,626
2%	Cardiology & Emergency Services	\$88,254
2%	Employee Health & Wellness	\$83,305
1%	Physical & Occupational Therapy	\$54,782



**\$750** grant received by  
**OB/GYN** from the **Community  
Health Outreach Fund**  
to support an educational  
class about puberty for  
young women

**\$945**

grant awarded to **Physical and Occupational Therapy (PT/OT)** from the **Glasser PT/OT Fund** to purchase an ITO 160 6-channel electrical stimulation unit that helps people with acute to chronic pain disorders accomplish everyday goals, return to work, and participate in recreational activity and daily care

**\$1,500**

**Outpatient Behavioral  
Health** received a grant from  
the **Kerchove Mental Health  
& Social Services Fund** to  
open a library for their Partial  
Hospitalization Program (PHP)  
patients



**\$36,659**

granted to the **NICU**  
from **Children's Miracle  
Network Hospitals**  
to purchase a cooling  
system, designed for use  
at the bedside and during  
transports







## RESEARCH NAVIGATION

- **Co-authored nine peer-reviewed publications** on topics including treatment of venous ulcers, food cravings after bariatric surgery and nonoperative treatment options for diverticulitis and appendicitis
- Provided research-focused education to more than **100 residents across 14 residency programs**
- Offered advanced research education to a cohort of **25 staff clinicians** to foster a scholarly culture at Emplify Health by Gundersen
- Welcomed **six summer research fellows**

## TRANSLATIONAL RESEARCH

**65** **new patients** recruited into the DiaSorin trial for Lyme disease

- Published a **research study** about successfully modifying murine gammaherpesvirus to prevent replication and disease
- Engaged **four** University of Wisconsin-La Crosse students and a **fellow** from St. Mary's University of Minnesota in our ovarian cancer and glioblastoma research lab
- Built a **new program** in digital pathology and participated in **five studies** to develop new AI-based breast cancer diagnostic tools

**864** **new participants**  
**enrolled** in *All of Us* at Emplify  
Health by Gundersen

**235** **patients enrolled**  
in clinical trials



Emplify Health by Gundersen and its WiNCORP partners received a **Platinum Award** at the NCI Community Oncology Research Program annual meeting.

**Four doctors** from Emplify Health by Gundersen's Cancer Center earned **Silver Certificates of Excellence** for patient enrollment in NCI trials.

Emplify Health by Gundersen is the **second site in the U.S.** to deliver a novel gene therapy in ophthalmology during a Phase 1/2 trial. Phase 1 tests safety in humans, while Phase 2 focuses on dosing and further safety evaluation, ensuring new treatments are safe and beneficial before widespread patient availability.

**34** presentations  
and workshops given locally  
and internationally

**112** ethics  
consultations performed  
across the health system

**3** medical research  
projects involving medical  
residents and summer fellows



**Thomas Harter, PhD,**  
continues to facilitate the  
ethics roundtable of the Rural  
Wisconsin Health Cooperative  
and is president-elect of the  
Bioethics Network of the  
Upper Midwest



**\$10.8M**

IN GRANTS MONITORED,  
REPRESENTING  
APPROXIMATELY 45 AWARDS

**\$1.6M**

AWARDED IN  
APPROPRIATIONS FROM  
STATE LEGISLATURES

**\$806,600**

GRANT RECEIVED FOR SIMULATION EQUIPMENT FOR OUR  
INTEGRATED CENTER FOR EDUCATION

## HRSA Telehealth Network Grant

The fourth and final year of the program resulted in:



**1,644**

unique  
patients



**4,621**

patient  
encounters



**696,694**

travel miles  
saved last year



**13,700**

travel hours  
saved last year

## MEDICAL EDUCATION OFFICE



**31**  
attendees

at the **first-ever Rural Clinician Conference** hosted by the Continuing Medical Education team and Kelly Hodgson-Kline, MD, and Katherine Cleven, PsyD (6.75 AMA Category 1 Credits™ were offered)

**Two new graduate Medical Education fellowships** started: Hospice & Palliative Medicine Fellowship and Family Medicine – Obstetrics (OB) Fellowship (our first fellows started in July 2024)

2024 graduating residents and fellows presented their research at **49 different local, regional and national forums**

**2,000+**

undergraduate, allied health, nursing and medical students were provided clinical experiences through the Medical Education Office

## RESOLVE THROUGH SHARING® (RTS)



**Standardized** policies, created new patient materials and provided nearly **\$1,500 in free resources and supplies** to support early pregnancy loss care across the Emplify Health by Gundersen region

**22+ hours** of RTS bereavement training content made available to Emplify Health by Gundersen staff

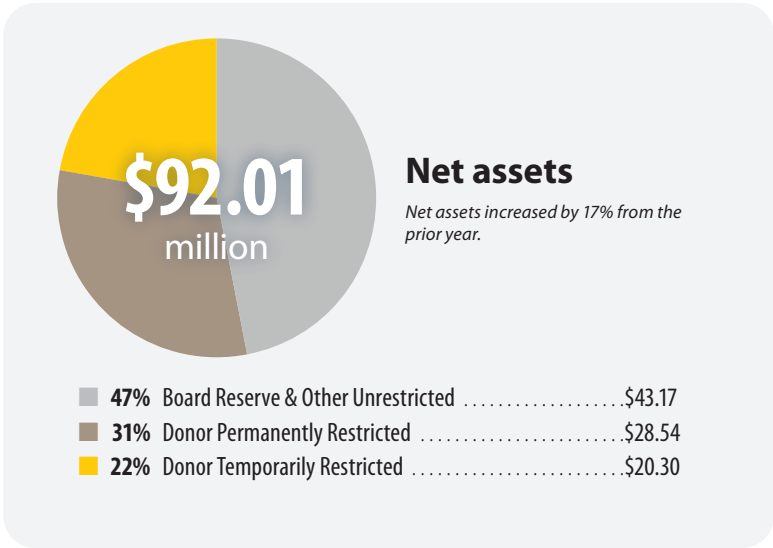
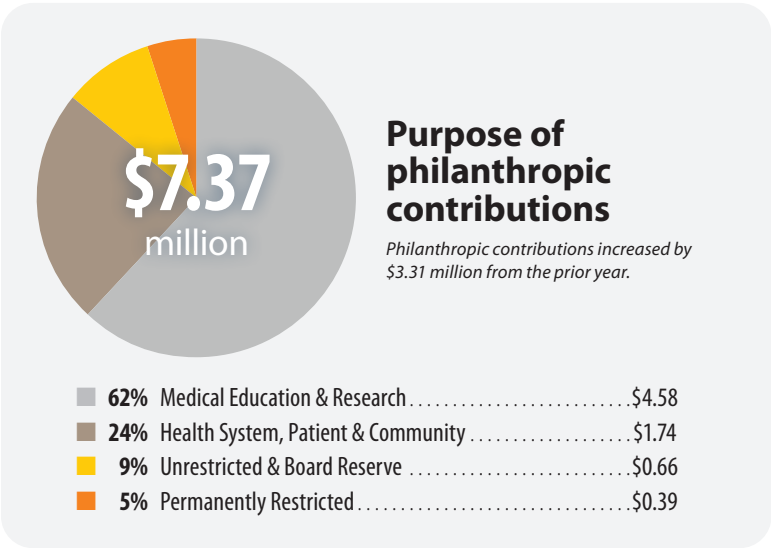
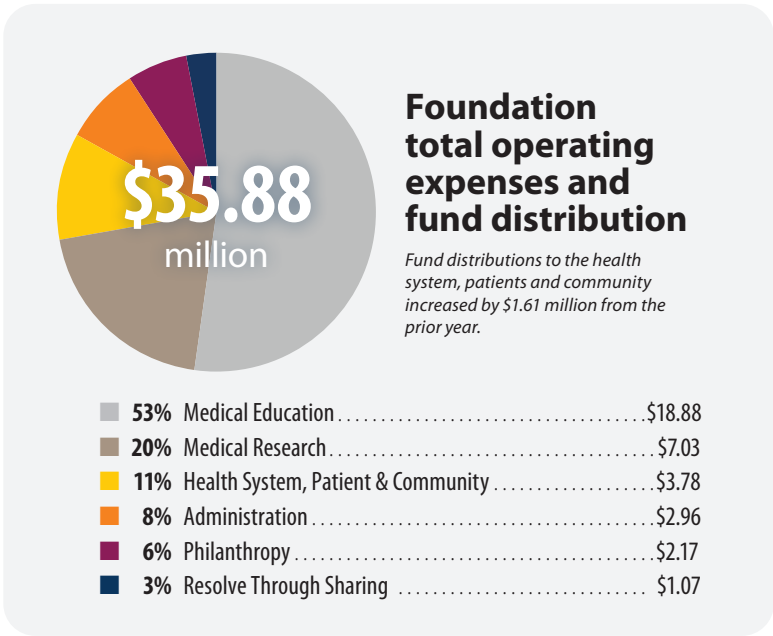
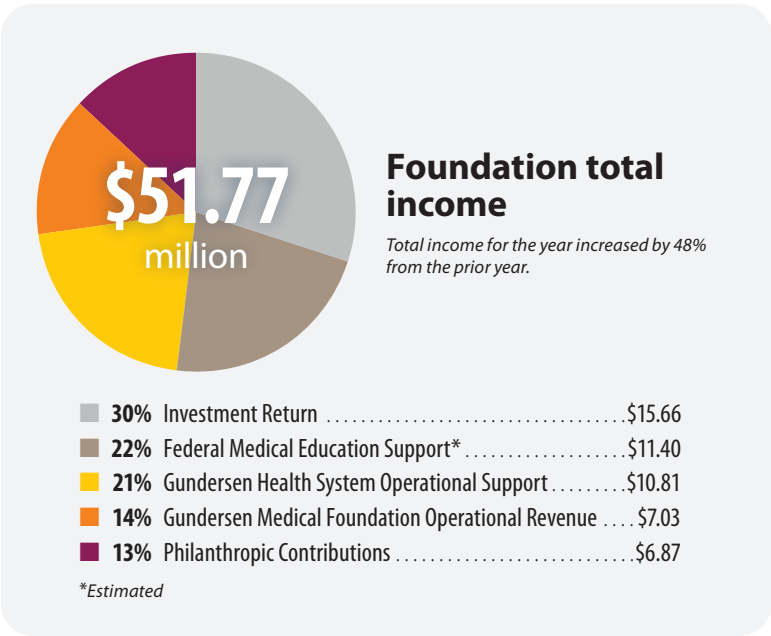
Certified **111 new bereavement coordinators** worldwide

Licensed RTS bereavement training content to providers in Colombia, South America, through the Baby Bear Foundation



# FINANCIALS 2024 OVERVIEW

The financials reported here represent fiscal year 2024, which was Oct. 1, 2023–Sept. 30, 2024.



## GUNDERSEN MEDICAL FOUNDATION 2024 LEADERSHIP

**Stephen Shapiro, MD**, chair  
**Lindsey Preston, MASL, BSN, RN**, vice president  
**Jean Hougom**, executive assistant

**PHILANTHROPY**  
**Todd Mahr, MD**, medical director  
**Mandy Richardson, MPH, CFRE**, director

**GUNDERSEN RESEARCH INSTITUTE**  
**Jennifer Kleven, MD**, medical director  
**Carolyn Heath**, director

**RESOLVE THROUGH SHARING\***  
**Randi Berg, MD**, medical director  
**Mary Beth Hensel**, director

**MEDICAL EDUCATION**  
**Ben Jarman, MD**, Edwin L. Overholt, MD, vice president of Medical Education/DIO  
**Jennifer Lee**, director

To learn more about Gundersen Medical Foundation’s mission, please call the Foundation office at (608) 775-6600 or visit [gundersenhealth.org/foundation](https://gundersenhealth.org/foundation).

**GUNDERSEN**  
**MEDICAL FOUNDATION**