

Brachial Plexus

Application Examples: arm pain

Coverage: Coronal coverage angle with spine. Axial coverage is C4 to top of arch and sagittal coverage is affected side only.

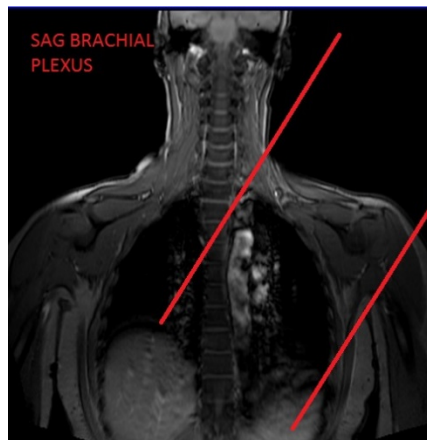
Sequence	FoV	Thickness	Gap
SAG STIR (AFFECTED SIDE ONLY)	30CM	3MM	0.3MM
SAG T1 (AFFECTED SIDE ONLY)	30CM	3MM	0.3MM
COR T2 STIR	30CM	3MM	0.3MM
COR T1	30CM	3MM	0.3MM
AX T2 IDEAL	30CM	3MM	0.3MM
AX T1	30CM	3MM	0.3MM
INJECT CONTRAST (1mmol/kg)			
SAG T1 IDEAL WITH GAD (AFFECTED SIDE ONLY)	30CM	3MM	0.3MM
AX T1 IDEAL WITH GAD	30CM	3MM	0.3MM
COR T1 IDEAL WITH GAD	30CM	3MM	0.3MM



AXIAL Coverage



COR Coverage



SAG Coverage