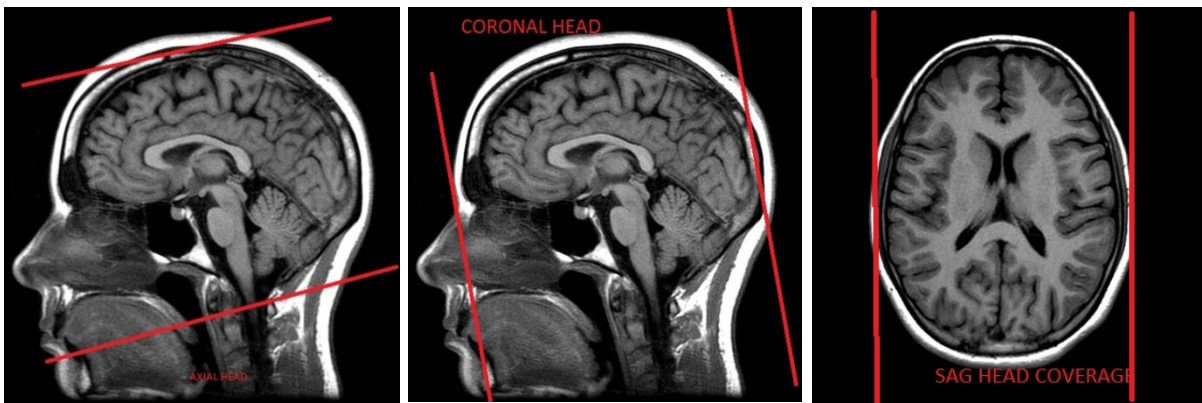


Anoxic Brain Injury

Application Examples: anoxic brain injury, pediatric cooling protocol, post cardiac arrest

| Sequence | FoV | Thickness | Gap |
|--|------|--------------------|--------|
| SAGITTAL T1 | 24CM | 4MM | 1MM |
| AX T2 TSE PROPELLER | 24CM | 4MM | 1MM |
| AX T2 FLAIR PROPELLER | 24CM | 4MM | 1MM |
| AX SWAN | 24CM | 4MM | 1MM |
| AX T1 | 24CM | 4MM | 1MM |
| COR T2 PROPELLER | 24CM | 4MM | 1MM |
| AX DWI (B-0, B-1000) | 24CM | 3MM | 1MM |
| AX ASL PERFUSION *(MAKE SURE HEAD IS STRAIGHT)* | 24CM | 4MM | NO GAP |
| INJECT CONTRAST (1mmol/kg) | | | |
| AX PERFUSION WITH GAD | 24CM | 4MM | 1MM |
| SAG CUBE FLAIR (RECON AX & COR 1 x1) | 24CM | 1.2MM | NO GAP |
| SAG T1 FS SPGR WITH GAD | 24CM | 4MM | 1MM |
| AX T1 FS SPGR WITH GAD | 24CM | 4MM | 1MM |
| SPECTROSCOPY (IF SCANNER IS EQUIPED/MULTIVOXEL) | 24CM | VOXEL SIZE 10MM | NO GAP |



AXIAL Coverage

COR Coverage

SAG Coverage