

PELVIS-INLET/OUTLET VIEWS

ROUTINE: Inlet and Outlet views of Pelvis.

DISTANCE: 44"

BUCKY: Yes

FOCAL SPOT: Large

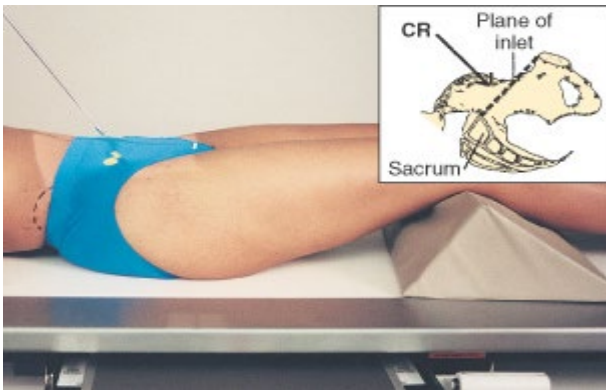
IMAGING PLATE: 14x17 CR cassette or DR detector

CENTRAL RAY:

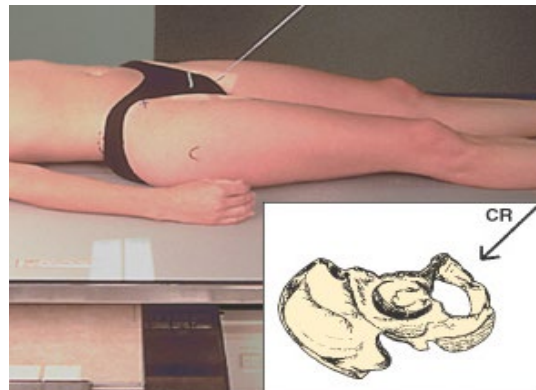
1. **Inlet**-35° caudal angle entering at midline at the level of the ASIS.
2. **Outlet**-35° cephalic angle entering at midline at the symphysis.

At least one of these views should include the crests.

Reviewed 10/01/19



Inlet View



Outlet View

