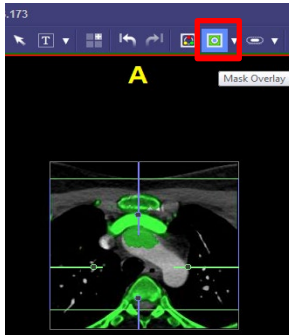


NON DE Angio Head and Neck 3D Post Processing:

3D Reformations: Rotating MIP of bone subtracted data, VR of COW and CPR MIPs of carotids.

1. **Rotating MIP:** Use bone suppressed data or remove bone, start in Left Lateral position and rotate to left 180 degrees.

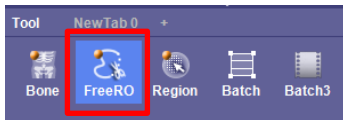
In Tera, select AXIAL thins and load into “GHS Carotid” workflow. It will automatically run “bone removal” to create a Rotating MIP. Tera does not suppress bone as well as Siemens, you will need to verify vessels are not missing. Scroll through Axial view with green “Mask Overlay” on. Use Region grow, holding “Shift+ Control” while holding left mouse to bring “green” vessels back into your image. If it “grows” beyond vessel use mouse wheel to dial it back, click “add/select” or undo as needed.



Free ROI tool can also be used by:

1. Circle around carotid on axial
2. Scroll through data circling periodically
3. System will interpolate data, select include
 - Must be accurate with circling close to bony anatomy to avoid pulling bone back

Clean up frags using paintbrush tool (in Free ROI function). You can also hit ‘CTRL+ E’ to “smooth” the image.



Once you’re happy with the Volume, Click on “Rotating MIP” element and turn off center lines. Adjust window level as needed.



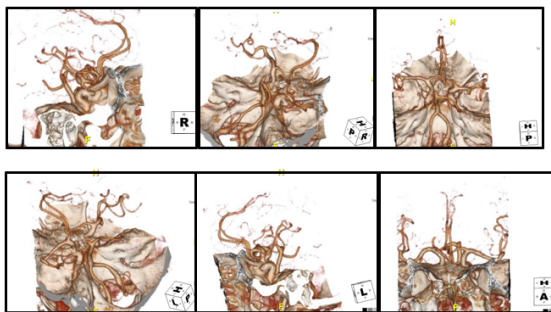
It defaults to a Left lateral position with a MIP Full (volume) set up to rotate 24 images 180 degrees to the right. Click Output. Send to PACS. Click Validate

Series Description: **Rotating MIP**

Series Number: **1001**

2. **3D VR** of head to show COW vasculature.

Click “Clear Mask” at bottom right corner of screen to bring bone Volume back. Cut skull away to visualize vessels and create Batch 3D “bowl views” capturing an image in right lateral, RPO, superior view, LPO, left lateral and frontal view. Choose 5 steps to next key frame and click Output. Send to PACS. Validate



Series Description: **3D**

Series Number: **1002**

3. **CPR MIPS of right and left carotid** with 360-degree rotation starting in AP.
Create CPR MIPS of each carotid. Starting in AP position from EAM to aortic arch, batch 360, 36 images. Validate

Series Description: **Right Carotid CPR MIP**

Series Number: **1003**

Series Description: **Left Carotid CPR MIP**

Series Number: **1004**

Save Workflow Scene