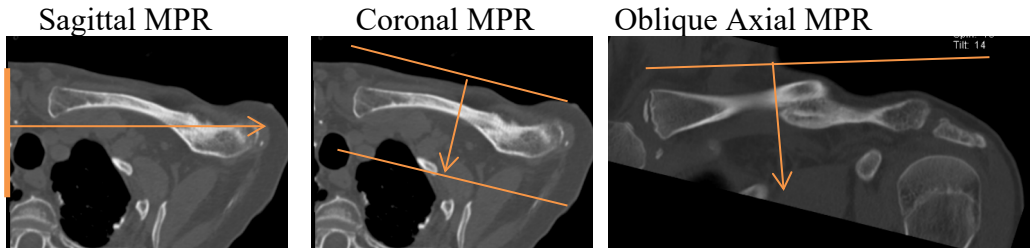


# Clavicle with 3D

Application Examples: fracture	
Scan Protocol (See for Technical Factors)	<b>Shoulder</b>

**Reformations:** 2D MPRs. 3D VR upon request.

1. *2x2 mm Coronal, Sagittal, and Oblique Axial MPRs.* First image sagittal MPR by keeping positioning plane of body (do not tilt with clavicle) and use axial viewport. Next adjust lines orthogonal to clavicle and use the axial view to plan the coronal MPR. Then use coronal viewport to plan the oblique axial MPR.



2. *3D VR of disarticulated clavicle.* Load into GL Bone workflow. First capture one image with a light shadow then remove outline and rotate 360 degrees with image number set at 36. Capture one last image to close rotation. Next, tumble 90 degrees with image captures every 15 degrees.

Series Description: **3D**

Series Number: **1001**

