

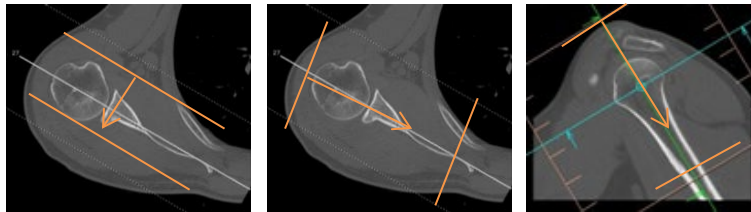
Glenoid with 3D

Application Examples: glenoid fracture	
Scan Protocol (See for Technical Factors)	Shoulder

Reformations: Coronal, sagittal, axial MPRs. 3D VRs upon request.

1. *2x2 mm Coronal, Sagittal and Axial MPRs.* Align true orthogonal planes to gleno-humeral joint. Rotate axial MPR to display a 35 degree angle before sending to PACS.

Series Description: **COR**
SAG
OBL AXIAL

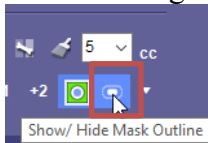


2. 3D VR of entire volume. Remove ribs. Rotate 360 degrees, capture one last image to close rotation, then tilt down and capture images every 15 degrees for superior to inferior views.

Series Description: **3D**
 Series Number: **1001**



3. 3D VR of glenoid. Remove humerus and Clavicle. Start with scapula in AP view. Capture image with shadow mask on, remove mask and rotate 180 degrees to demonstrate glenoid with image number set at 24.



Series Description: **3D**
 Series Number: **1002**

