

Shoulder with 3D

Siemens go.All

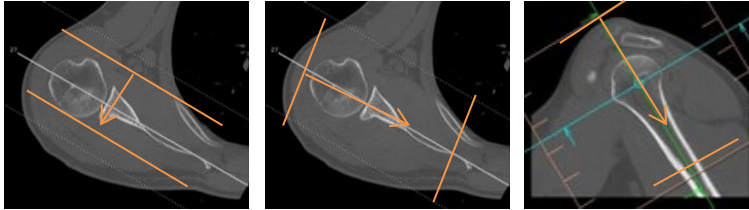
Application Examples: fracture

Scan Protocol (See for Technical Factors)

Shoulder**Reformations:** Coronal, Sagittal, Axial MPRs. 3D VR upon request.

1. *2x2 mm Coronal, Sagittal and Axial MPRs.* Align true orthogonal planes to glenohumeral joint or area of interest per case. Rotate axial MPR to display a 35 degree angle before sending to PACS.

Series Description: **COR**
SAG
OBL AXIAL



2. 3D VR of entire volume. Remove ribs. Rotate 360 degrees, capture one more image to close rotation and then tilt down and capture images every 15 degrees for superior to inferior views.

Series Description: **3D**Series Number: **1001**