

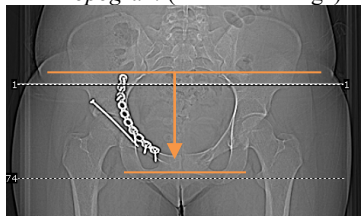
# Bony Pelvis F/U Acetabulum

Siemens go.ALL

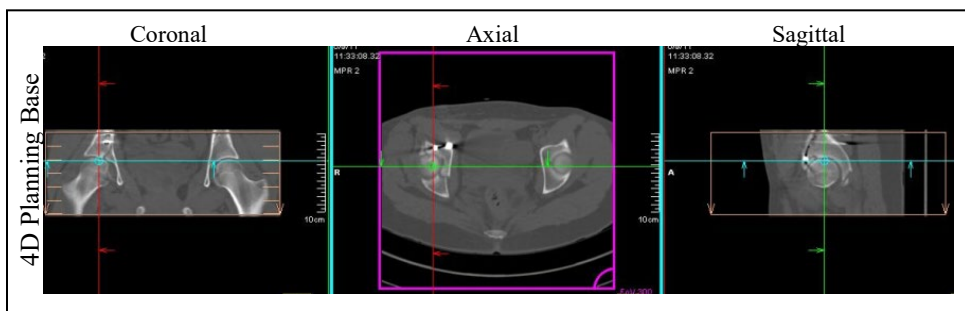
Application Examples: f/u or post op acetabulum fracture	
Scan Protocol (See for Technical Factors)	<b>Bony Pelvis</b>

**Scan Range:** Scan just above acetabulum through obturator foramen or as specified by requesting MD.

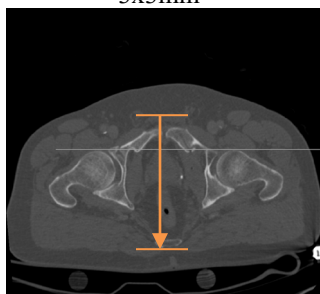
AP Topogram (area of coverage)



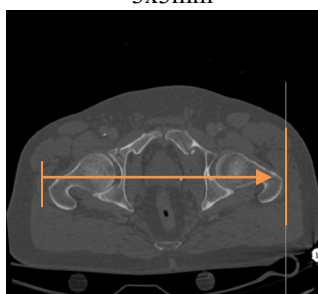
**2D Reformations:** First, align all viewport lines to be orthogonal to bony pelvis. Next, make coronal and sagittal MPRs. If patient is not in ideal position, create a true axial MPR image data set.



**Coronal MPR**  
3x3mm



**Sagittal MPR**  
3x3mm



**3D:** No.