

CT Bony Pelvis Trauma with 3D

Siemens go.All

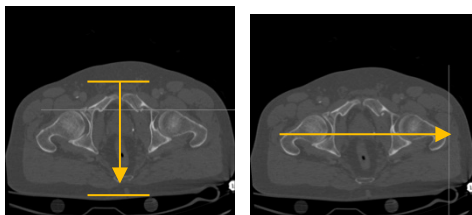
Application Examples: fracture

Scan Protocol (See for Technical Factors)

Bony Pelvis**Reformations:** Coronal and Sagittal MPRs. 3D VR and Pelvic Views upon request.

1. *3x3 mm Coronal and Sagittal MPRs.* Align all three view ports in true orthogonal planes to pelvis before making reformations. Create an axial MPR data set if needed.

Series Description: **COR**
SAG



2. *3D VR with femoral heads subtracted.* Load thin data set to GL Bony Pelvis. Rotate 360 degrees with image number set at 36, capture final image to complete rotation and tilt down capturing image every 15 degrees until showing inlet view. Save all in one series.

Series Description: **3D**
Series Number: **1001**



3. *Pelvic Views:* AP, PA, Inlet, Outlet, Obturator Oblique, Iliac Oblique.

Series Description: **Pelvic Views**
Series Number: **1002**

AP**PA**

(180° from AP)

**Outlet**

(40° cephalic)

**Inlet**

(40° caudal)

**Obturator & Iliac Oblique**

(45° Rt and Lt Oblique – tip of coccyx projects over femoral head)

