

Airway with 3D

Siemens go.All

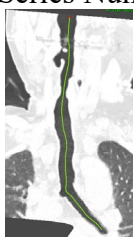
Application Examples:

Scan Protocol (See for Technical Factors)

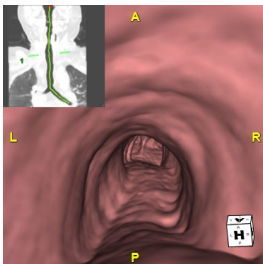
CT Neck without contrast

Scan Range: Oral cavity through carina.**Special Instructions:** Instruct patient to hold breath, do not swallow.**Reformation:** CPR of Trachea, 3D Flythrough and 3D VR.

1. *CPR MIP of Trachea.* Load thin data set to GL Airway workflow. Shift and left click on airway. Edit center line and change to MIP and use lung window. Using Batch mode, rotate volume from AP projection 360 degree with image number set at 36.

Series Description: **Trachea CPR MIP**Series Number: **1001**

2. *3D Flythrough.* Click batch in CPR viewport. Click perpendicular. Select 3D VR 5x5 and send images to Output panel.

Series Description: **3D Flythrough**Series Number: **1002**

3. *3D VR.* Go back to patient list and load thin data set to Flythrough. Select trachea only. Edit centerline as needed. Select

Series Description: **3D Trachea**Series Number: **1003**