

Sinus for Image Guidance ONLY

Siemens go.All

Application Examples: pre-op sinus surgery

Oral Contrast	No
IV Contrast / Volume	No

Technical Factors

Scan Type	Spiral
Detector Collimator	Acq 32 x 0.7mm
X-Care	ON
Care kV	ON / Sn110
Care Dose 4D	ON / 40 mAs
Rotation Time	1.0
Pitch	0.55
Typical CTDIvol	7.34 mGy \pm 50%

Topogram: Lateral, 256 mm

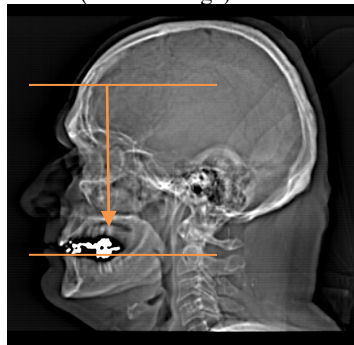
Sinus	Recon Type	Width / Increment	Algorithm	Safire	Window	FoV	Series Description	Networking	Post Processing
Recon 1	Axial	1 x 1	Hr64	Off	Sinuses	250	AXIAL 1.0 BONE	PACS	None
Recon 2	Axial	1 x 1	Hr40	Off	Base Orbita	250	AXIAL 1.0 STND	PACS	None

Patient Position: Position patient so IOML is perpendicular to table and head is in a symmetrical position (no rotation or tilt). Do not use cushions or sponges around head or face. The patient's ears must not touch head holder. The patient should be comfortable and must remain completely still through entire scan. If patient motion occurs, scan must be repeated.

Scan Instructions: Scan patient with eyes closed. No gantry tilt. No restraints across head or face, but across chin is okay.

Scan Range: Scan entire frontal sinuses to just below the occlusal surface of the teeth (include entire front teeth).

Lateral Topogram
(scan coverage)



Recons: Must include ears, maxillary teeth and tip of the nose in display FoV.

Networking: Send both series to PACS.