

CT Hematuria with 3D

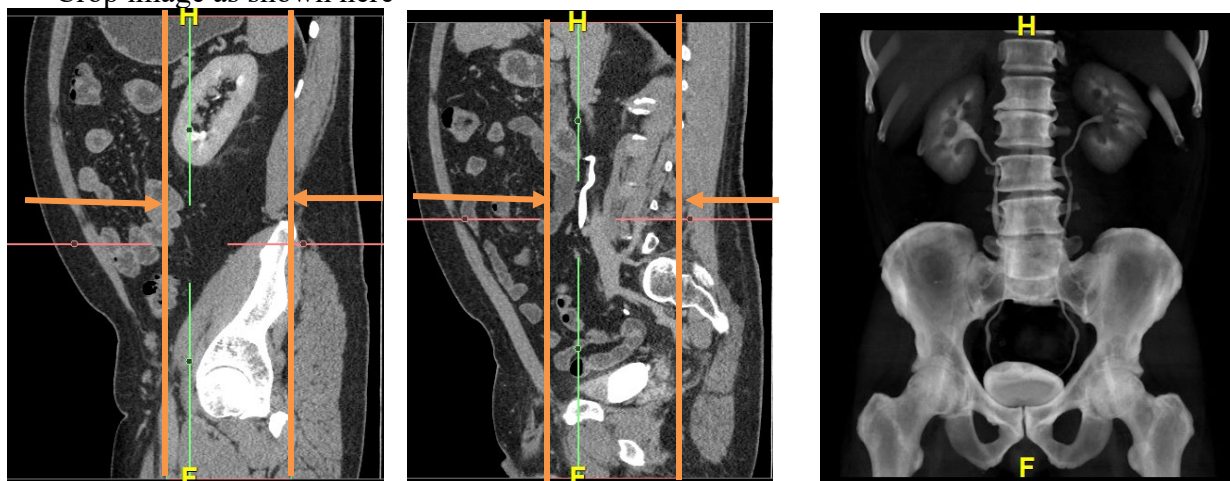
Siemens go.All

Application Examples: Hematuria	
Scan Protocol (See for Technical Factors)	2 Phase or 3 Phase Renal

Reformation: Raysum of kidneys, ureter and bladder. Follow steps below to image capture.

- Load AXIAL DELAY image series to CT Hematuria workflow
- Crop image as depicted below to include kidneys, ureters and bladder (ok to clip sacrum, allowing better visualization of ureters in pelvis, leave SI joints in image to maintain general pelvis appearance)
- Window/Level image as necessary to enhance anatomy
- Move mouse to upper right viewport and click “c” to capture
- Go to Output panel
- Click Send
- Label Series Description “**RAYSUM**”
- Series Number **1001**

Crop image as shown here



Notes: No added 3D charge at this time.

If additional delays or prone images acquired, do additional Raysum if full ureter can NOT been seen in one image, put all in same series.