

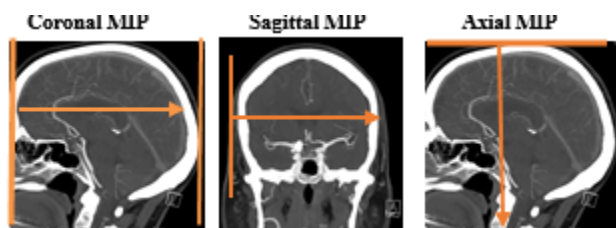
CT Angio Neck & Head

Application Examples: stroke, carotid stenosis, dissection	
Scan Protocol (See for Technical Factors)	CT Angio Neck/Head

Reformations: Coronal, sagittal and axial MIPs, rotating MIP of bone subtracted data, VR of COW and CPR MIPs of carotids.

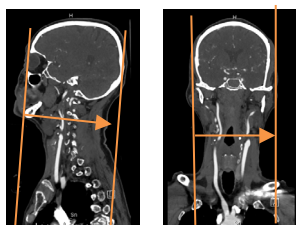
1. *10x4mm coronal, sagittal and axial MIPs of head.* Align to inter-hemispheric fissure (sagittal), perpendicular to the floor of the sella (coronal) and parallel to sella (axial).

Series Description: **HEAD COR MIP**
 HEAD SAG MIP
 HEAD AXIAL MIP



2. *1x1mm coronal and sagittal MIPs of head and neck.* Align to carotids.

Series Description: **COR MIP**
 SAG MIP



3. *Rotating MIP of carotids.* Use bone suppressed data or remove bone, start in Left Lateral position and rotate to left 180 degrees.

Series Description: **Rotating MIP**

Series Number: **1000**

4. 3D VR of head to show COW vasculature.

- a. **Dual Energy:** Using suppressed images, orientate volume into an AP position.

- i. **Spin** 360 degrees

Series Description: **3D**

Series Number: **1001**

- ii. **Tumble** 360 degrees down

Series Description: **3D**

Series Number: **1002**

- b. **Non-Dual Energy:** Remove outer portions of skull. Batch 3D with 6 snapshots—right lateral, RPO, superior view, LPO, left lateral and frontal view. Choose 5 steps to next key frame and click Output.

5. *CPR MIP views of right and left carotid* with 360 degree rotation starting in AP using 0.6 dataset (not suppressed images).

Series Description: **Right Carotid CPR MIP**

Series Number: **1003**

Left Carotid CPR MIP

Series Number: **1004**