

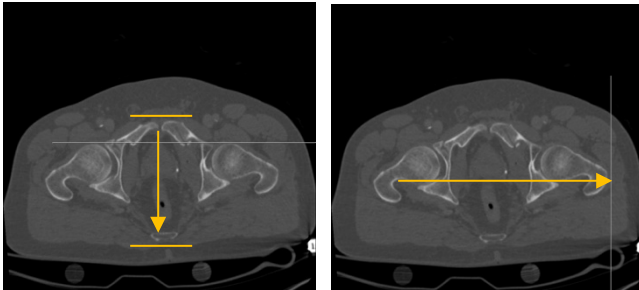
CT Bony Pelvis

| | |
|---|--------------------|
| Application Examples: fracture | |
| Scan Protocol (See for Technical Factors) | Bony Pelvis |

Reformations: Coronal and Sagittal MPRs. 3D VR upon request.

1. *3x3 mm Coronal and Sagittal MPRs.* Align all three view ports in true orthogonal planes to pelvis before making reformations. Create an axial MPR data set if needed.

Series Description: **COR**
SAG



2. *3D VR.* Rotate 360 degrees with image number set at 36. Capture one last image to close rotation then tilt down and image capture every 15 degrees until showing inlet view.

Series Description: **3D**
Series Number: **1001**

