

Bony Pelvis F/U Acetabulum

Siemens 64 Slice

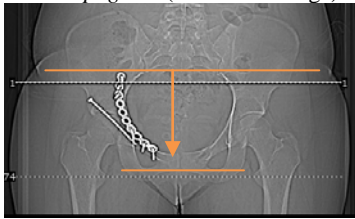
Application Examples: f/u or post op acetabulum fracture

Scan Protocol (See for Technical Factors)

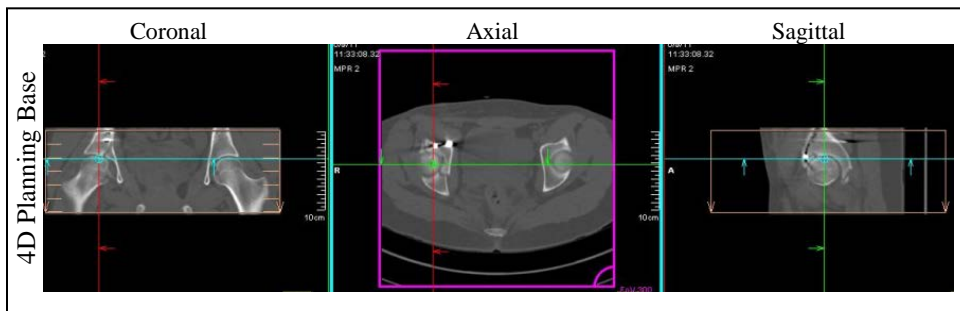
Bony Pelvis

Scan Range: Scan just above acetabulum through obturator foramen or as specified by requesting MD.

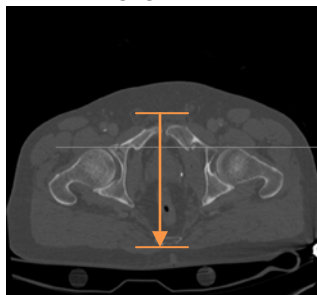
AP Topogram (area of coverage)



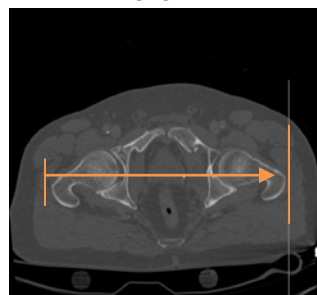
2D Reformations: First, align all viewport lines to be orthogonal to bony pelvis. Next, make coronal and sagittal MPRs. If patient is not in ideal position, create a true axial MPR image data set.



Coronal MPR
3x3mm



Sagittal MPR
3x3mm



3D: No.