

**CT Neck Parathyroid Multi-Phase** Siemens Flash

Application Examples: parathyroid adenoma

IV Contrast / Volume	75ml Omnipaque 350 / 50 mL saline chase
Injection Rate	4.0 mL /sec

*Technical Factors*

Scan Delay	30 seconds
Patient Instructions	Do not swallow

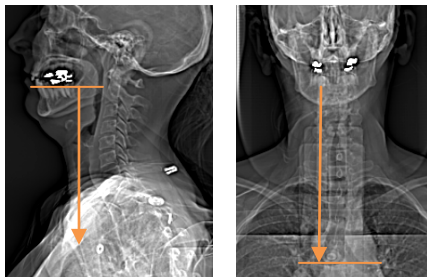
Scan Type	Spiral
Detector Collimator	Acq 128 x 0.6 mm
X-Care	Off
Care kV	On / 120 kV
Care Dose 4D	On / 125 mAs
Rotation Time (seconds)	0.5
Pitch	0.55
Typical CTDIvol	8.47 mGy $\pm$ 50%

Topogram: AP &amp; Lateral, 512 mm

Unenhanced	Recon Type	W / I	Algorithm	Safire	Window	FoV	Series Description	Networking	Post Processing
Recon 1	Axial	1 x 1	I31s	2	Larynx	200	AXIAL WITHOUT	PACS	None

Arterial	Recon Type	W / I	Algorithm	Safire	Window	FoV	Series Description	Networking	Post Processing
Recon 1	Axial	1 x 1	I31s	2	Larynx	200	AXIAL ARTERIAL	PACS	None
Recon 2	3D:COR	1 x 1	I31s	2	Larynx	-	COR MIP	PACS	Coronal MIP
Recon 3	3D:SAG	1 x 1	I31s	2	Larynx	-	SAG MIP	PACS	Sagittal MIP

Venous	Recon Type	W / I	Algorithm	Safire	Window	FoV	Series Description	Networking	Post Processing
Recon 1	Axial	1 x 1	I31s	2	Larynx	200	AXIAL VENOUS	PACS	None
Recon 2	3D:COR	1 x 1	I31s	2	Larynx	-	COR	PACS	Coronal MPR
Recon 3	3D:SAG	1 x 1	I31s	2	Larynx	-	SAG	PACS	Sagittal MPR

**IV Placement:**  $\geq$  20 gauge, *preferably* in antecubital (AC) fossa.**Patient Position:** Patient lying in supine position, neck hyperextended slightly and head secured. IOML should be perpendicular to table.**Scan Instructions:** Instruct patient not to swallow during scan.**Scan Range:** From just below occlusal surface of teeth to level of carina for all phases.**Scan Phases:** An arterial scan delay time of 30 seconds is used after start of contrast injection. Portal venous phase is performed at 80 seconds.**Recons and Reformations:** Coronal and sagittal MIPs from arterial phase. Coronal and sagittal MPRs from PV phase.