

Application Examples: fracture

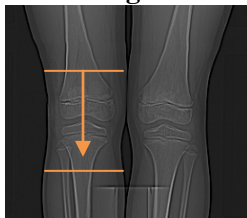
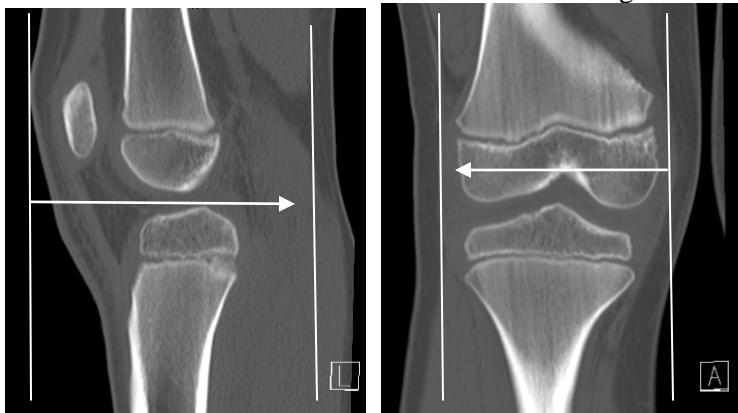
Technical Factors

Detector Collimator	Acq 128 x 0.6 mm
kV	120 kV
Care Dose	Off / 160 mAs
Rotation Time (seconds)	1.0
Pitch	0.9
Typical CTDIvol	10.81 mGy \pm 50%

Topogram: Lateral & AP, 256 mm

Extremity	Recon Type	Width / Increment	Algorithm	Safire	Window	FoV	Series Description	Networking	Post Processing
Recon 1	Axial	1 x 1	B70s	Off	Extremity	150	AXIAL	PACS	None
Recon 2	3D:COR	2 x 2	B20s	Off	Extremity	-	COR	PACS	Coronal MPR
Recon 3	3D:SAG	2 x 2	B20s	Off	Extremity	-	SAG	PACS	Sagittal MPR
Recon 4	Axial	0.6 x 0.6	B20s	Off	Extremity	150	AXIAL 0.6 STND	TeraRecon	None

This protocol is used to image the knee.

Patient Position: Patient supine, feet first with legs flat on the table (no cushions or wedges).**Scan Range:** Knee anatomy to include entire fracture if applicable.**Recons and Reformations:** 2x2 mm coronal and sagittal reformations orthogonal to affected knee.**3D:** Upon request. See post processing protocol.