

CT Face

Application Examples: fracture	
Scan Protocol (See for Technical Factors)	Face

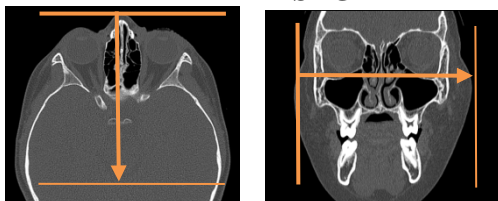
Reformations: Coronal and sagittal MPRs and 3D VR spin and tumble.

1. *2x2 mm Coronal and sagittal MPRs.* If unable to place patient in ideal position, make a true axial MPR data set parallel to hard palate.

Series Description:

COR

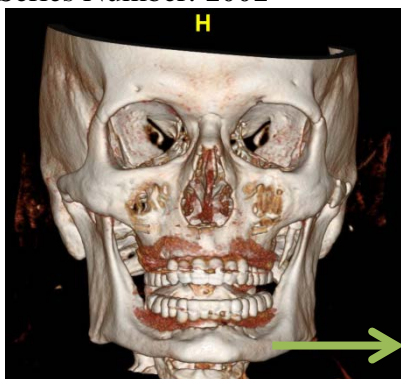
SAG



2. *3D VR Spin.* Load thin data set into GL Bone workflow. Rotate 360 degrees with image number set at 36. Capture one at the end to close rotation. If hardware is present, repeat rotation using Hardware Bone template. Both spins in one series.

Series Description: **3D**

Series Number: **1001**



3. *3D VR Tumble.* Rotate 360 degrees with image number set at 36. If hardware is present, repeat rotation using Hardware Bone template. Both tumbles in one series.

Series Description: **3D**

Series Number: **1002**

