

## CT Chest for Pectus Excavatum

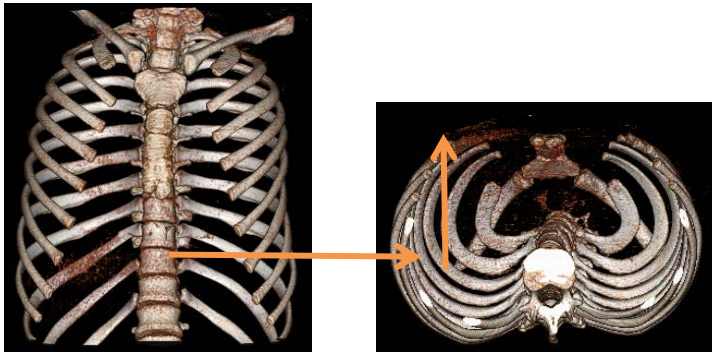
Application Examples: Pectus Excavatum	
Scan Protocol (See for Technical Factors)	<b>Pectus Excavatum</b>

### Reformation: 3D VR.

1. *3D VR*. Load thin data set to GL Bony workflow. Remove any extra bony anatomy such as the chin and scapulae. Using Batch mode, rotate the volume from the AP projection to the left 360 degree with image number set at 36. Capture again to close rotation. Tip the volume back in 15 degree increments and capture images until volume is in the axial projection.

Series Description: **3D**

Series Number: **1001**



This exam does not need a 3D charge added as this is built into exam.