

SC Joints

Siemens 16 Slice

Application Examples: dislocation, fracture

Oral Contrast	No
IV Contrast / Volume	No

Breath Hold	Inspiration / Hold Breath
-------------	---------------------------

Technical Factors

Scan Type	Spiral
Detector Collimator	Acq 16 x 0.6 mm
kV / mAs / Rotation Time (seconds)	130 kV / 262 mAs / 1.0
Care Dose 4D	On
Pitch	0.8
Typical CTDIvol	32.57 mGy

Topogram: AP, 256 mm

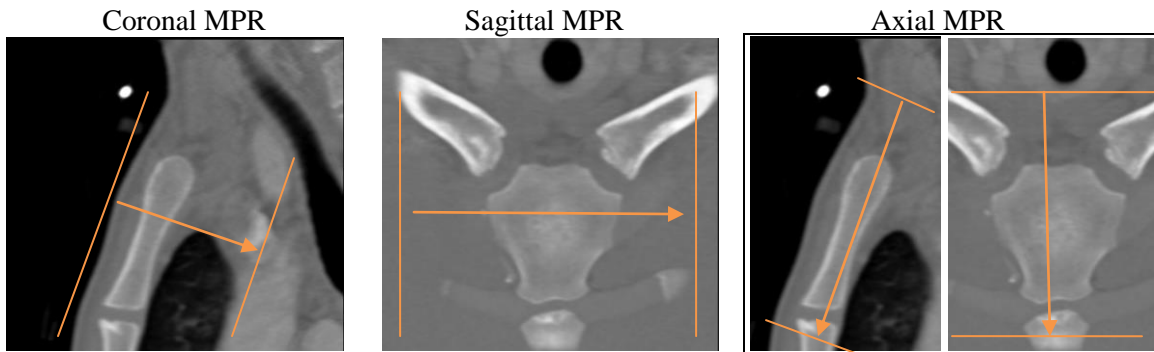
SC Joints	Width / Increment	Kernel	Window	FoV	Series Description	Networking
Recon 1	2 x 2	B60s	Shoulder	120	AXIAL	PACS
Recon 2	0.75 x 0.5	B60s	Shoulder	120	AXIAL 0.75 x 0.5 BONE	MPR / DEFINITION
Recon 3	0.75 x 0.5	B20s	Shoulder	120	AXIAL 0.75 x 0.5 SMOOTH	TERARECON

Patient Position: Patient lying in supine position, head first, shoulders square.

Scan Range: Entire sternoclavicular joints.

2D Reformations: Post processing done in 3D card. Align all three viewports in true orthogonal planes to SC joints before planning coronal, sagittal and axial MPRs as depicted below.

Series: SC Joints	Reformat Type	Width / Increment	Window	Series Description	Networking
Recon 2	Coronal MPR	2 x 2	Shoulder	COR	PACS
Recon 2	Sagittal MPR	2 x 2	Shoulder	SAG	PACS
Recon 2	Axial MPR	2 x 2	Shoulder	AXIAL MPR	PACS



3D: Upon request.