

Post Arthroplasty Fracture

Application Examples: arthroplasty post-op - fracture protocol

Scan Protocol (See for Technical Factors)

Lumbar Spine

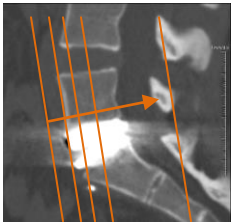
This protocol is used to evaluate for fractures on post arthroplasty patients.

Patient Position: Patient lying in supine position, arms positioned comfortably above head, lower legs supported. Place a cushion under the patient's knees—this will reduce the curve in the spine and also help make the patient more comfortable.

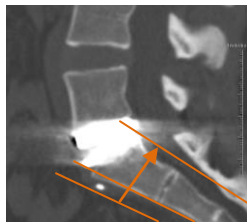
Scan Range: One vertebral level above and below area of interest, specified by neurosurgery provider.

2D Reformations: True orthogonal planes to vertebral bodies directly above and below disc(s) replaced. Cuts parallel to disc(s) replaced as well as a sagittal MPR(s) in alignment with disc hardware. A L5-S1 arthroplasty post processing example is depicted below. Note patients may have multi-level disc replacements. Reformations are done per level(s) requested.

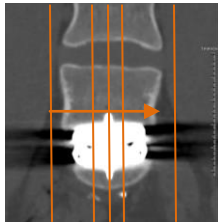
1. Coronal L5 MPR
3x3mm



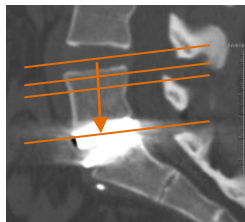
2. Coronal S1 MPR
3x3mm



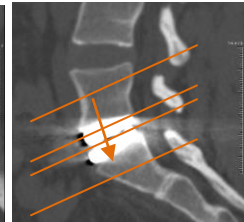
3. Sagittal L5-S1 MPR
3x3mm



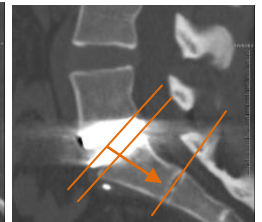
4. Axial L5 Body MPR
2x2mm



5. Axial L5-S1
2x2mm



6. Axial Body S1
2x2mm



Series Descriptions:

- (1) Topogram
- (2) AXIAL BONE
- (3) AXIAL STND
- (4) COR L5
- (5) COR S1
- (6) SAG L5-S1
- (7) AXIAL L5
- (8) AXIAL L5-S1
- (9) AXIAL S1

3D: None