

Pedicle Screws

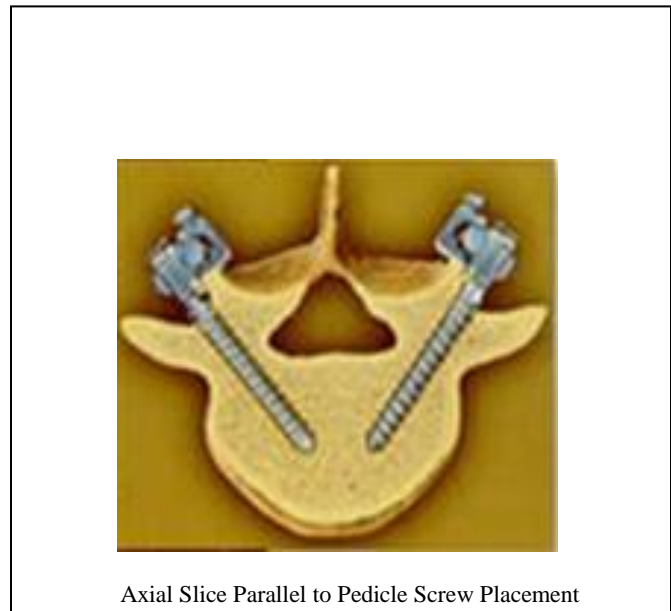
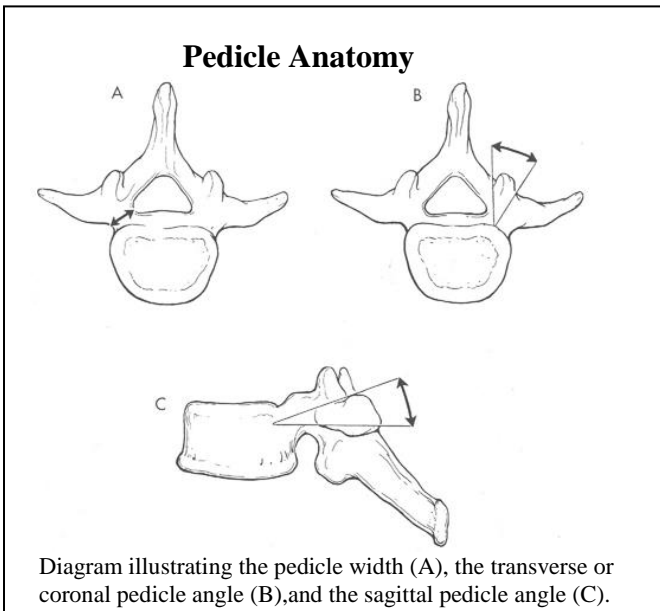
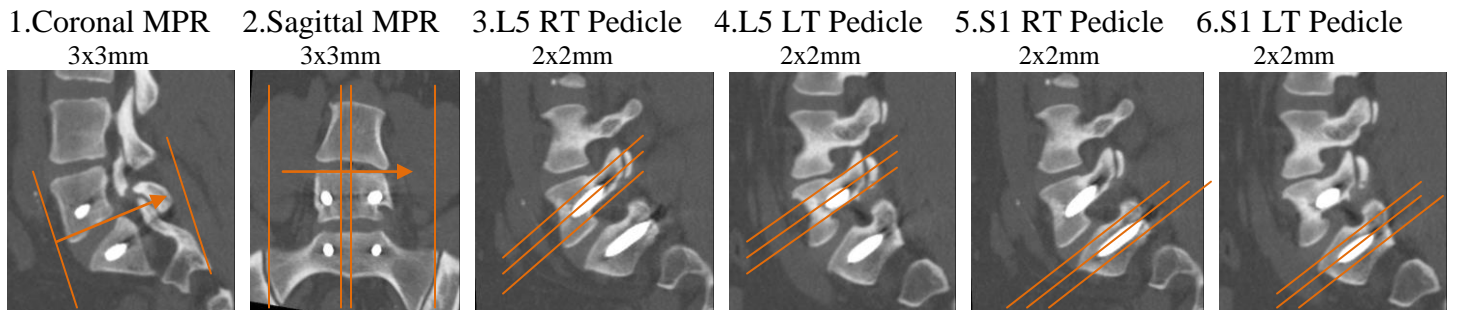
Application Examples: spine post-op fusion	
Scan Protocol (See for Technical Factors)	Spine (dependent on vertebral levels of pedicle screws)

These screws are used to correct deformity, and/or treat trauma. Similar to other bone screws, pedicle screws may be used in instrumentation procedures to affix rods and plates to the spine. The screws may also be used to immobilize part of the spine to assist fusion by holding bony structures together.

Patient Position: Patient lying in supine position, arms positioned comfortably above the head, lower legs supported. Place a cushion under the patient's knees. This will reduce lordotic curve and also help make the patient more comfortable.

Scan Range: One vertebral level above and below area of interest, specified by neurology provider or Radiologist.

2D Reformations: When setting up to image pedicle screws, first align all viewport lines to be orthogonal to spine. Make a coronal MPR from the sagittal viewport and a sagittal MPR from the coronal viewport. Next, adjust lines on coronal and sagittal viewports to pedicle screw of interest, leaving axial viewport lines true to spine. Then, set range on sagittal viewport to be parallel to screw of interest. Repeat on each pedicle screw. Note same level pedicle screws may be on same series, but only if they are entering in pedicle at same angle. L5-S1 pedicle screw post processing example is depicted below.



3D: Upon request