

Knee

Siemens 16 Slice

Application Examples: fracture

Technical Factors

Scan Type	Spiral
Detector Collimator	Acq 16 x 0.6 mm
kV / mAs / Rotation Time	130 kV / 95mAs / 1.0 seconds
Care Dose	Off
Pitch	0.9
Typical CTDIvol	12.00 mGy

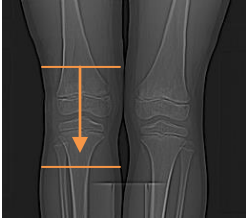
Topogram: AP, 256 mm

Knee	Width / Increment	Kernel	Window	FoV	Series Description	Networking
Recon 1	2 x 2	B70s	Extremity	150	AXIAL	PACS
Recon 2	0.75 x 0.5	B20s	Bone	150	AXIAL 0.75 x 0.5 SMOOTH	MPR / Definition / TeraRecon

This protocol is used to image the knee

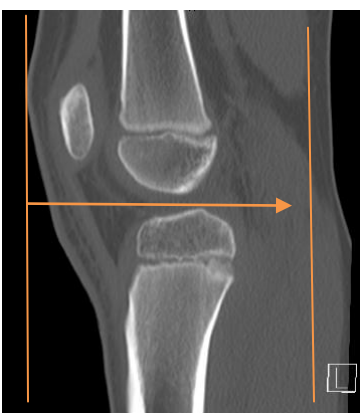
Patient Position: Patient supine, feet first with legs flat on the table (no cushions or wedges).

Scan Range: Knee anatomy to include entire fracture if applicable.



2D Reformations: Post processing done in 3D card. Align all viewport lines orthogonal to affected knee before creating coronal and sagittal MPRs.

Series: Knee	Reformat Type	Width / Increment	Window	Series Description	Networking
Recon 2	Coronal MPR	2 x 2	Bone	COR	PACS
Recon 2	Sagittal MPR	2 x 2	Bone	SAG	PACS



3D: Upon request.