

CT Wrist

Application Examples: carpal bone fracture

Scan Protocol (See for Technical Factors)

Upper Extremity

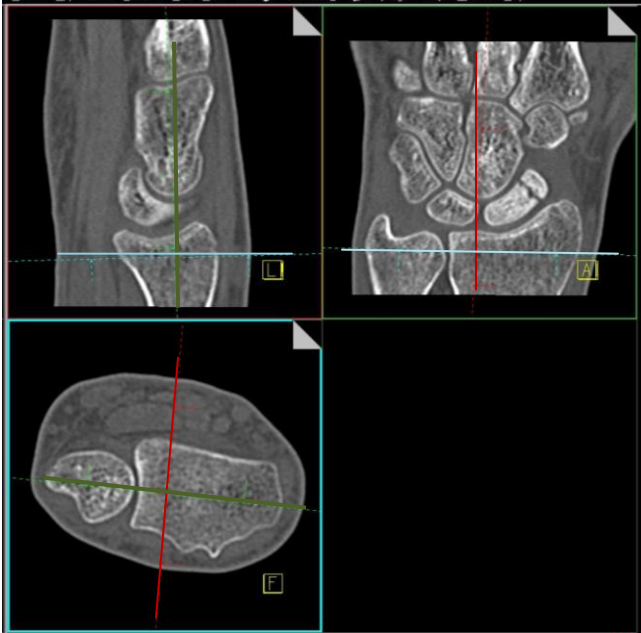
Patient Position: Patient lying in prone position, with affected arm extended above head. Body will be slightly off-centered in effort to place affected wrist in isocenter.

Scan Range: Base of metacarpals through DRUJ (distal radioulnar joint) to include entire fracture.



2D Reformations: First, align all viewport lines to be orthogonal to wrist. Next, make coronal and sagittal MPRs. If patient is not in ideal position, create a true axial MPR image set, 2x2mm.

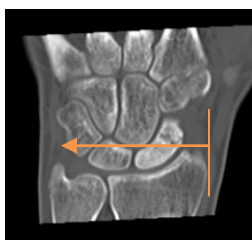
Orthogonal Planes to Wrist



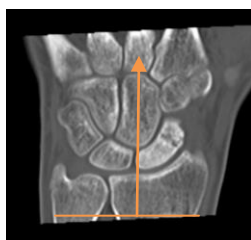
Coronal MPR
2x2 mm



Sagittal MPR
2x2 mm



Axial MPR
2x2 mm



3D Reformations: Upon request.