

CT Scaphoid Follow Up

Application Examples: f/u scaphoid fracture

Scan Protocol (See for Technical Factors)

Upper Extremity

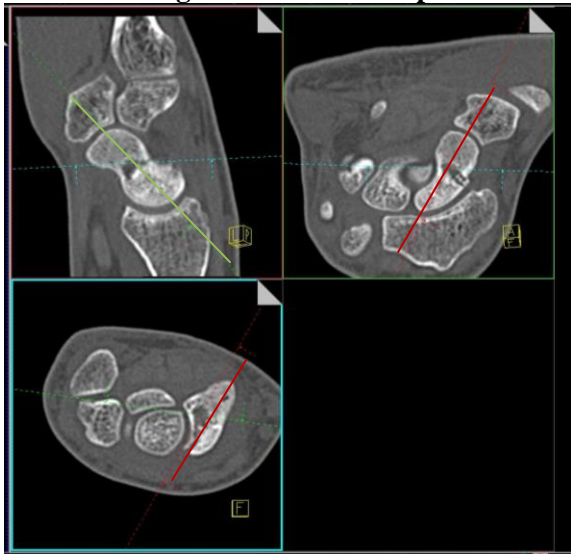
Patient Position: Patient lying in prone position, with affected arm extended above head. Body will be slightly off-centered in effort to place affected wrist in isocenter.

Scan Range: Entire scaphoid only.



2D Reformations: Align all viewport lines to be orthogonal to scaphoid and make coronal and sagittal MPRs, 1x1 mm.

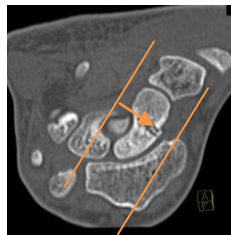
Orthogonal Planes to Scaphoid



Scaphoid Coronal MPR
1x1 mm



Scaphoid Sagittal MPR
1x1 mm



3D Reformations: Upon request.