

CT Scaphoid

| | |
|---|-----------------|
| Application Examples: scaphoid fracture | |
| Scan Protocol (See for Technical Factors) | Upper Extremity |

This scaphoid protocol is used on patients with no previous scaphoid scan. The scan range and reformations will include the entire wrist.

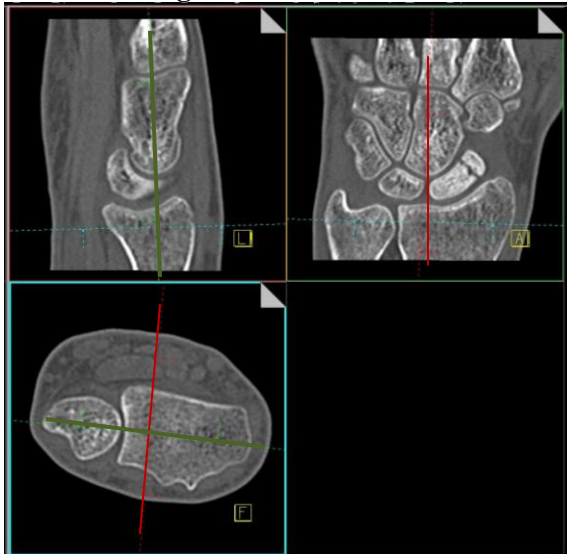
Patient Position: Patient lying in prone or decubitus position, with affected arm extended above head. Body will be slightly off-centered in effort to place affected wrist in isocenter.



Scan Range: DRUJ (distal radioulnar joint) through base of metacarpals.

2D Reformations: First, align all viewport lines to be orthogonal to wrist. Next, make coronal and sagittal MPRs to wrist. If patient is not in ideal position, create a true axial MPR image set, 2x2mm. Then, align all viewport lines to be orthogonal to scaphoid and make coronal and sagittal MPRs.

Orthogonal Planes to Wrist



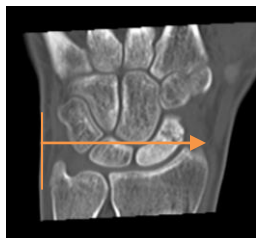
Orthogonal Planes to Scaphoid



Wrist Coronal MPR
2x2 mm



Wrist Sagittal MPR
2x2 mm



Wrist Axial MPR
2x2 mm



Scaphoid Coronal MPR
1x1 mm



Scaphoid Sagittal MPR
1x1 mm



3D: Upon request.