

## **Appendix**

**Imaging Protocol:** Although only specific images are documented, the right lower quadrant is to be scanned in detail. The following images will represent the normal Appendix ultrasound exam, but additional images may be necessary for appropriate documentation.

### **1. Cecum**

Long axis- attempt to see the ileocecal valve where small bowel joins cecum  
Cineclip- through tip

### **2. Appendix (if seen)**

Long with and without color  
Trans with and without compression  
Trans with color doppler  
Cine, with and without compression

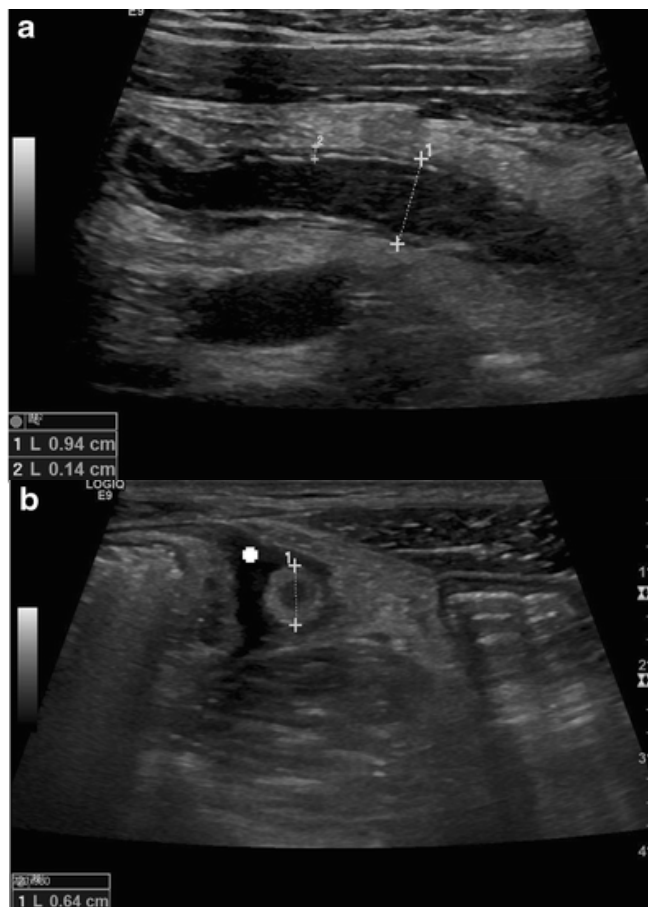
If Appendix is not seen:

### **3. RLQ**

Iliac vessels long and trans  
Gutter area for free fluid  
Cine demonstrating bowel peristalsis  
Right Ovary (female patients)

### **4. Long Right GB**

### **5. Long Rt Kidney**



### **Additional Information:**

- ❖ Only performed on Pediatrics <16 years old and adults in pregnancy.
- ❖ Diagnostic for appendicitis if diameter measurement is **6mm or greater**.
- ❖ An unseen Appendix requires further imaging unless an alternative diagnosis has been established.

**Scheduling & Prep:** 40-minute time slot.

**Equipment:** Ultrasound unit with 3.5 MHz transducer. It may be necessary to have a unit with 2.5 or 5.0 MHz transducers.

**Order & Procedure Code:** US Appendix *IMG11659*

**Approved by:**

\_\_\_\_\_  
Jody Riherd MD

\_\_\_\_\_  
Kaylee Waldvogel RDMS RVT MBA