

Scaphoid Follow-Up with 3D

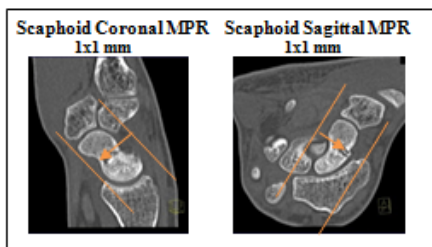
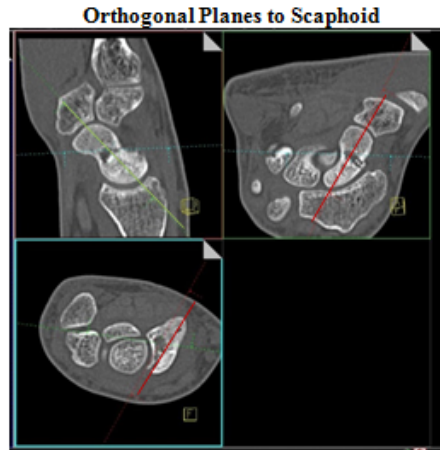
Siemens go.All

Application Examples: follow up scaphoid fracture

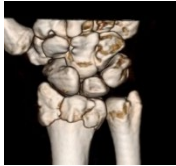
Scan Protocol (See for Technical Factors)

Upper Extremity**Reformations:** Coronal and sagittal MPRs. 3D VRs upon request.

1. *1x1 mm coronal and sagittal MPRs of scaphoid only.*



2. *3D VR Spin.* Load into GL Bone workflow. Using batch mode, rotate 360 degrees with image number set at 36. If hardware, repeat spin using hardware template. Save all in one series.

Series Description: **3D**Series Number: **1001**

3. *3D VR of disarticulated scaphoid* (case by case dependent). (Circle scaphoid with Free ROI tool, hit exclude and then reverse.) First capture one image with a light shadow then remove outline and rotate 360 degrees with image number set at 36. Capture one more image to close rotation, next tumble 90 degrees with image captures every 15 degrees. If hardware, repeat using hardware template. Save all in one series.

Series Description: **3D**Series Number: **1002**