

**Scaphoid with 3D**

Siemens go.All

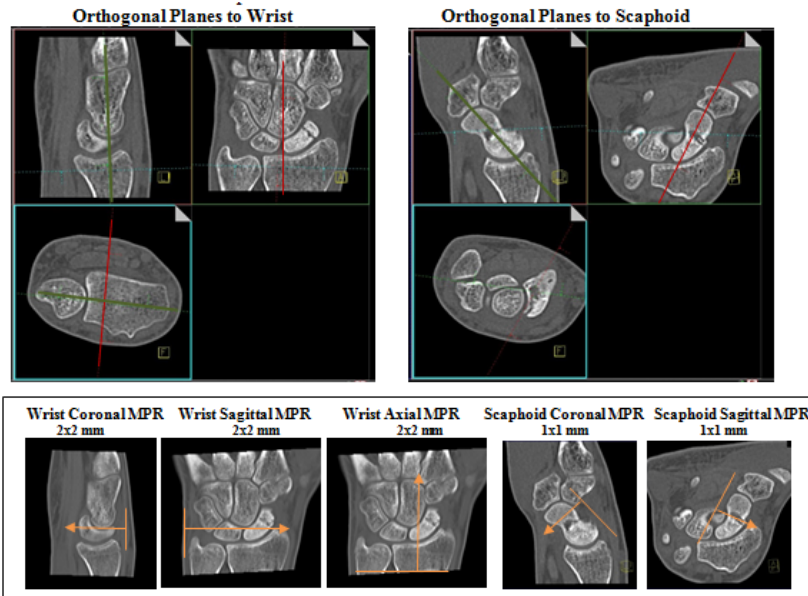
Application Examples: new scaphoid fracture

Scan Protocol (See for Technical Factors)

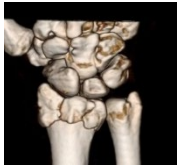
Upper Extremity

**Reformations:** Coronal and sagittal MPRs. 3D VRs upon request.

1. *2x2 mm Coronal and Sagittal MPRs of wrist and 1x1 mm Coronal and Sagittal MPRs of scaphoid.* If patient is not scanned in ideal position, create a true axial MPR image set to distal radius and carpal bones.



2. *3D VR Spin.* Load into GL Bone workflow. Using batch mode, rotate 360 degrees with image number set at 36.

Series Description: **3D**Series Number: **1001**

3. *3D VR of disarticulated scaphoid (case by case dependent).* (Use Free ROI to circle all of scaphoid, hit exclude, then reverse to bring just the scaphoid back.) First capture one image with a light shadow then remove outline and rotate 360 degrees with image number set at 36. Next, tumble 90 degrees with image captures every 15 degrees. Save all in one series.

Series Description: **3D**Series Number: **1002**