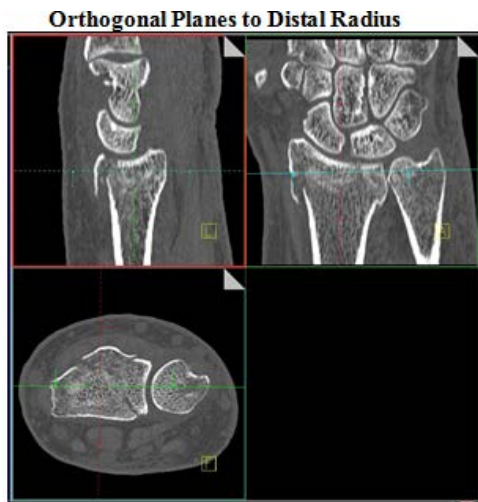


## CT Distal Radius

Application Examples: distal radius fracture	
Scan Protocol (See for Technical Factors)	Upper Extremity

**Reformations:** Coronal and Sagittal MPRs. 3D VRs upon request.

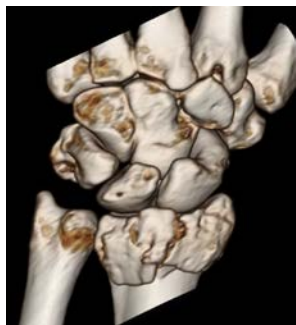
1. *2x2 mm Coronal and Sagittal MPRs.* Align all viewport lines to be orthogonal to wrist. Make coronal and sagittal MPRs along the long axis of radius. If patient is not scanned in ideal position, create an axial MPR image set perpendicular to articular surface of radius.



2. *3D VR Spin of entire volume.* Load into GL Bone workflow. Using batch mode, rotate 360 degrees with image number set at 36.

Series Description: **3D**

Series Number: **1001**



3. *3D VR of disarticulated radius showing articular surface.* First capture one image with a light shadow then remove outline and rotate 360 degrees with image number set at 36. Capture one more image to close rotation. Next, tumble distal radius to show articular surface capturing images every 15 degrees. Save all in one series.

Series Description: **3D**

Series Number: **1002**

