

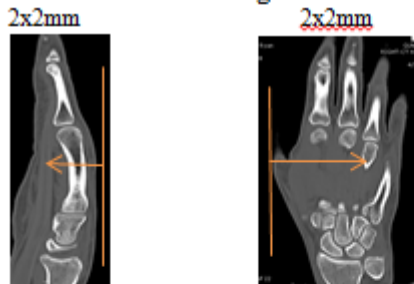
CT Hand / Digit

Application Examples: fracture metacarpals, phalanges	
Scan Protocol (See for Technical Factors)	Upper Extremity

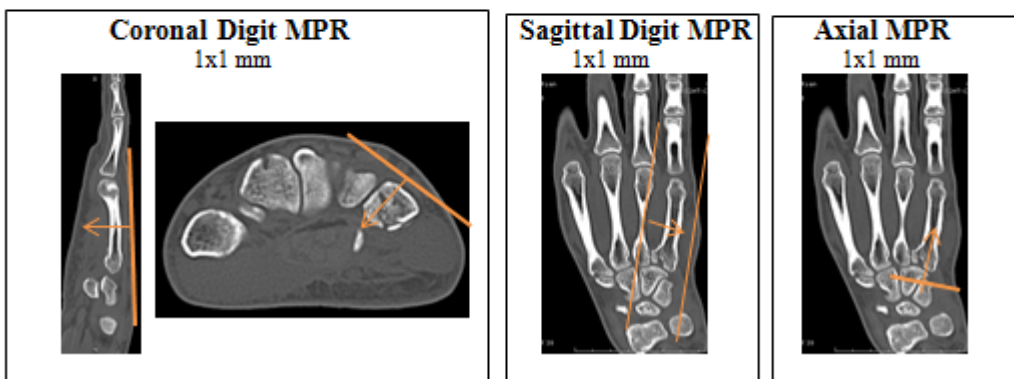
Reformations: 2D MPRs. 3D VR upon request.

1. *2x2 mm Coronal and Sagittal MPRs.* First, align all viewport lines to be orthogonal to hand. Next, make coronal and sagittal MPRs along the long axis of the hand. If patient is not in ideal position, create an axial MPR perpendicular to the long axis of the hand or effected anatomy. If there is a metacarpal or phalange fracture, create an additional set of 1x1 mm MPRs aligning planes to the affected anatomy

Coronal Hand MPR **Sagittal Hand MPR**



Post processing example of a 5th metacarpal fracture is depicted below.



2. *3D VR Spin.* Load into GL Bone workflow. Using batch mode, rotate 360 degrees with image number set at 36.

Series Description: **3D**

Series Number: **1001**

